

## FINALLY FALL(?)

September was a busy month here at SoNHS! We had many events take place on campus and have many things to celebrate! And amidst it all, we entered the Fall season (seemingly in name only)! And while it may be Fall, we have still been fairing decently warm-to-hot days, but we're sure that any day now a switch will suddenly flip and with no warning we'll be plunged into chilly days and all the leaves will change and we'll start bundling up before going outside, as is always the way here in the Midwest. We hope everyone has had an easy time settling in to this new school year, and that we can all soon stop sweating and can move on to Autumn with its cozy drinks and brisk mornings. Happy Fall!! 🍁

### Contact Us

(816) 235-1700

[nurses@umkc.edu](mailto:nurses@umkc.edu)

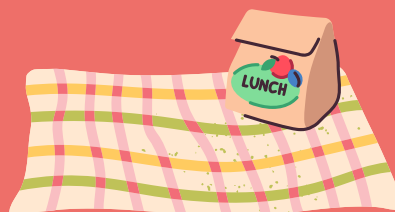
2464 Charlotte St, KCMO 64108  
Suite 2319

### UPCOMING IMPORTANT DATES

- October 9<sup>th</sup> - Grad School Untapped (We'll have a rep there to discuss our graduate nursing degrees!) 6-9pm, BEH
- October 17<sup>th</sup> - Last day to submit an application for a Spring start for our Nursing Graduate programs

## LUNCH ON THE LAWN

We kicked off September with the annual "Lunch on the Lawn" event! At the beginning of every academic year, all the schools on the Health Sciences campus gather on the lawn to enjoy a free lunch and get to interact with UMKC & Student Organizations and Groups while mingling with students from the other schools! It's always a great time, and we had great weather for it as well!



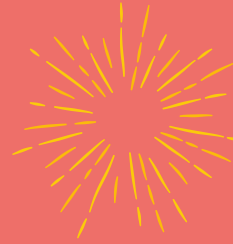
# COMMUNITY HIGHLIGHTS

We have a few updates from this month regarding faculty and students who have achieved things worth celebrating! Join us in wishing our heartfelt congratulations!



## Dr. Joseph Lightner

Dr. Joseph (Joey) Lightner, as of September 1<sup>st</sup>, has earned tenure here at the School of Nursing and Health Studies! Along with that, he has also been promoted to the position of Associate Professor. Congratulations Dr. Lightner!



## SoNHS Holds First Scholarship Recognition Event

In a new effort to bring some well-earned recognition to those who have been awarded scholarships among our student population, we held our first Scholarship Recognition Event! We invited all scholarship recipients to come and receive personal congratulations from the Dean, as well as from our Department Chairs, Division Directors, our Alumni Board President, and members of faculty & staff. It was a sweet event, and everyone had a great time mingling at the reception afterwards. We're so proud of our scholarship recipients and the work they've put in towards furthering their education. Congratulations again to all our recipients!





# SCHOLAR OF THE MONTH

Throughout the year, we have designated Scholars/Scientists of the Month, highlighting a member of our faculty and hearing about what they're doing in their career and/or research!



This month's Scholar of the Month is:

**Dr. Sherri Sellers!** (pictured left)

Sherri Sellers, DNP, APRN, WHNP-BC, Women's Health Nurse Practitioner Track Coordinator, Clinical Assistant Professor, recently shared her thoughts on her scholarship activities when asked the following questions:

## 1. What is the focus of your program of scholarship/research?

The focus of my scholarship is on women's health. My entire career as a nurse has been centered around taking care of women throughout their lifespan, and now as faculty, teaching others about the uniqueness of the female journey. As a DNP-prepared WHNP, I look for areas of clinical practice to improve within my field and train the graduate nursing students to see patient care through this new leadership role/lens. I am a women's health generalist, which means I care for patients in primary care settings in obstetrics and gynecology. My scholarship consists of ensuring that I teach and practice up-to-date, research-based care within my field and empowering my students to do the same throughout their careers as nursing leaders. Of particular interest to me is the challenges that incarcerated females face as they exit custody, specifically contraceptive choice.

## 2. What has been your most interesting finding?

I have worked in multiple settings, in the United States and internationally, as an APRN taking care of women in private practice, public health, community-based clinics, a birth center, and prisons. Each of these settings has been so diverse, but in the diversity, I see that patients are more alike than they are different with similar goals and drives in life, which makes it easy to develop rapport that is essential in the patient-provider relationship.

## 3. What has been your biggest challenge?

When I worked clinically in female prisons, it was hard at times to deliver the care that I believe every patient deserves. Being an advocate and a voice for my patients was often met with barriers and became complicated to navigate them through a system meant to reduce the cost of care and physical movement of patients in need of advanced treatments. Knowing what is necessary for a patient and being unable to deliver it sometimes became challenging and frustrating but did not stop me from pursuing the appropriate intervention for each patient.

## 4. What has been your greatest satisfaction?

Watching my WHNP students evolve from eager bachelor prepared RNs to competent medical providers. They start off their graduate school programs eager to make a difference in women's health, and I get to be a part of helping them develop their focus within our field. It is a joy and honor to watch their growth and transition to practice.

# DENMARK DIARIES

We have a new addition to our monthly newsletter this semester! One of our BHS students, Gabrielle Porter, is studying abroad in Denmark due to the scholarship she received from the Gilman Program. As part of the program, Gabrielle wanted to share about her experiences in the newsletter to bring some awareness to what's possible for students with help from programs like Gilman. Here is her first installment!

Hej! My name is Gabrielle Porter. I'm a senior at UMKC studying Health Sciences to go into PT. This semester, I'm studying at the Danish Institute for Study Abroad (DIS) in Copenhagen, Denmark. I was able to participate in this program in large part due to scholarships from UMKC, the Honors program, and the Gilman Scholarship program.

The Gilman Program provides scholarships for students with a desire to study abroad who also have high financial need, making study abroad possible for students like me who would otherwise not be able to.

My main goal for my study abroad experience is to diversify my worldview. I chose to study in Denmark because I wanted to be immersed in a culture that is different from the U.S. and be surrounded by a different language, while still being able to navigate daily life as someone who is only fluent in English (almost all Danes are fluent English speakers). I also wanted to learn about healthcare in the context of a country with universal healthcare coverage.

I hope that the experience and perspective I gain from studying health care in Denmark will make me a more well-rounded practitioner in my career. Because of the social safety net and the overall culture in Denmark, people are less competitive with coworkers for raises and promotions, which leads to Danish workspaces being more cooperative and collaboration focused. I've already seen this first hand and I'm excited to take this lesson into my career, as these skills are highly valuable in the healthcare setting.

As nursing and health studies majors, it can be difficult for us to find study abroad programs that offer classes that fulfill our major requirements. This is why I'm so grateful that DIS was suggested to me. I'm able to stay on track with my credits while also engaging in fun and interesting field studies. So far, I've visited an urban farm to learn about sustainable urban design and a safe drug use facility, which helps reduce instances of drug overdose and drug use related harm.

Outside of academics, I've experienced so much! The Danish culture is much more relaxed and the people have a lot of trust in their well built systems and each other. There is little need for small talk and smiling to strangers on the street because they assume that everybody is fine with each other and they would rather have deep, meaningful conversations. My favorite things to do in Copenhagen are visit the museums and botanic garden, go to the beach, share quality time and meals with friends, my host family, and my hosts' cats, and enjoy navigating the city by train and bike (which I will sorely miss when I return to the U.S.). I've also enjoyed sea bathing (something Danes even do throughout the winter), the beautiful Scandinavian architecture and pastel buildings, and all of the amazing bakeries that are everywhere (at least 2 or 3 on every block in the city).

I look forward to sharing the rest my adventures and experiences with you throughout the semester!

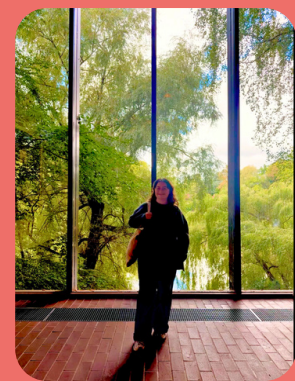
Hav en god dag,  
Gabrielle





# DENMARK DIARIES

Here are some pictures Gabrielle has also shared from her time in Denmark!





# RESEARCH ADVANCEMENTS

Here's this month's announcements and updates on research that has been published or grants that have been received by our research faculty and students!

## SONHS RESEARCH AND SCHOLARSHIP DEVELOPMENTS

### Essentials for Integrity and High-Quality Scholarly Work in the Era of Generative Artificial Intelligence

Mei R Fu, PhD, RN, FAAN

Generative Artificial Intelligence (AI) has changed the scholarly world. The use of AI to generate ideas, writings, codes, images, data and data analysis are permissive. Scholarly journals may have different policies and procedures to guide the use of AI in developing manuscripts and peer review. Understanding to what extent that authors or reviewers can use AI in preparing or evaluating manuscripts and whether AI use requires disclosure is crucial for ensuring integrity and high-quality publications and fair and unbiased review.

Many reputable journals have policies that require authors and reviewers to disclose AI use and have specific policies regarding AI use. While the use of AI has in many ways made scholarly work seemingly easier, principles and regulations regarding the use of AI for scholarly work are still evolving. Considerations are imperative regarding the impact of long-term use of AI on human experiences, human insights and intuition, human responsibility in creating knowledge and evaluation of scholarly work. Facing the rapidly changing generative AI world, it is essential that students, scholars and researchers be part of the driving force to safeguard and uphold the quality and integrity of scholarly work in the era of Generative AI. The initial step to be part of the driving force is to understand AI use and relevant policies and regulations.

Dean Melissa Joy Roberts and Dr. Mei R Fu (Associate Dean for Research) recently published an editorial in the Journal of Transcultural Nursing on AI use for peer review and manuscript development. This editorial provides basic knowledges. You may read this article via this link: <https://journals.sagepub.com/doi/full/10.1177/10436596251382994>

Fu, M. R., & Roberts, M. J. (2025). Essentials for Integrity and High-Quality Peer Review in the Era of Generative Artificial Intelligence. Journal of transcultural nursing : official journal of the Transcultural Nursing Society, 10436596251382994. Advance online publication. <https://doi.org/10.1177/10436596251382994> PMID: 41014173.

# SONHS SCHOLARLY PUBLICATIONS : SEPTEMBER 2025

\*Indicates student; \*\*Indicates PhD student; Bolded names indicate faculty and researcher.

Mei Rosemary Fu

Fu, M. R., & Roberts, M.J. (2025). Essentials for Integrity and High-Quality Peer Review in the Era of Generative Artificial Intelligence. *Journal of transcultural nursing : official journal of the Transcultural Nursing Society*, 10436596251382994. Advance online publication. <https://doi.org/10.1177/10436596251382994> PMID: 41014173.

Cypress, B., Gharzeddine, R., Rosemary Fu, M.R., Dahan, T., & Abate, S. (2025). Improving Healthcare Workers' Psychological Well-Being through Family Involvement in the ICU: An Interdisciplinary Reflection– Response to Sagita et al. (2025), *Intensive and Critical Care, Nursing*, Reference: YICCN\_104230.

Melissa Joy Roberts

Fu, M. R., & Roberts, M.J. (2025). Essentials for Integrity and High-Quality Peer Review in the Era of Generative Artificial Intelligence. *Journal of transcultural nursing : official journal of the Transcultural Nursing Society*, 10436596251382994. Advance online publication. <https://doi.org/10.1177/10436596251382994> PMID: 41014173.

## SONHS SCHOLARLY PRESENTATIONS

\*Indicates student; \*\*Indicates PhD student; Bolded names indicate faculty and researcher.

Mei Rosemary Fu

Fu, M.R., Liu, B., King, G.W., Lee, Y., \*\*Alanazi, A., \*\*Alsaoud, H., \*Kochar, A., \*Forni, J., (September 12-14, 2025) Statistical Analysis of End-User Preferences for AI-Assisted Behavioral Pain Interventions. 2025 ISU-NISS Conference on AI and Statistics, Ames, IA, United States.

